



El Monte Union High School District



Architectural Services RFQ No. 2011-P13



Architectural Services - RFQ No. 2011-P13

Important Dates

Anticipated Time Schedule

- **Mandatory Pre-Proposal Meeting 3:00 PM 02/07/12**

A mandatory Pre-Proposal meeting will be held on February 7, 2012 at 3:00 p.m. in the Transportation Training Room, 1003 Durfee Avenue, South El Monte, CA 91733.

- **Final Questions Due no later than 3:00 PM 02/14/12**

RFI's Questions must be in writing and may be directed to Rosana McLeod, Director of Purchasing, by-email to rmcleod@emuhsd.k12.ca.us

- **Request for Qualifications due to District by 3 PM 02/23/12**

The respondent shall submit one (1) original, five (5) copies, and a CD of its response by **3:00 PM (local time), February 23, 2012 to:**

El Monte Union High School District

Director of Purchasing

1003 Durfee Avenue

South El Monte CA 91733

Attention: Rosana McLeod

Architectural Services - RFQ No. 2011-P13

Important Dates

- Issue Short-List Announcement to Firms 02/27/12
- Interview Short-List of Firms for Selection 03/05/12
- Issue Selection Notice to Selected Firms 03/09/12

El Monte High School Baseball Stadium

Proposed Scope of work

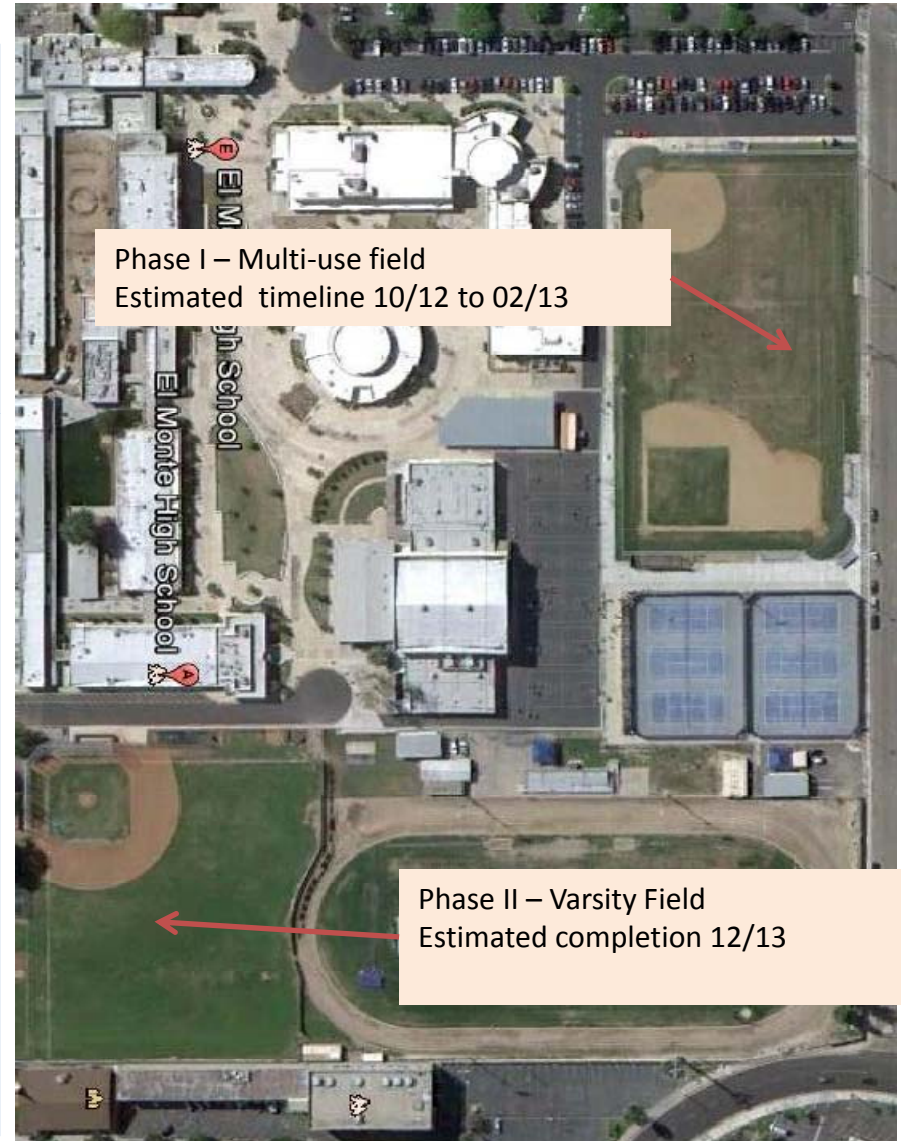
Phase II Varsity Field

- 250 seating area, including ADA-compliant seating
- Two dugouts
- Concession stand
- Three batting cages
- Two Bullpens
- Field lighting
- Scoreboard
- Site Fencing & Gates
- 25 foot high of extended outfield fencing
- Synthetic field

Phase I Multi-use field

- Synthetic field
- Fencing
- Scoreboard
- Concession stand
- Lighting

Architect must have experience with designing athletic facilities.

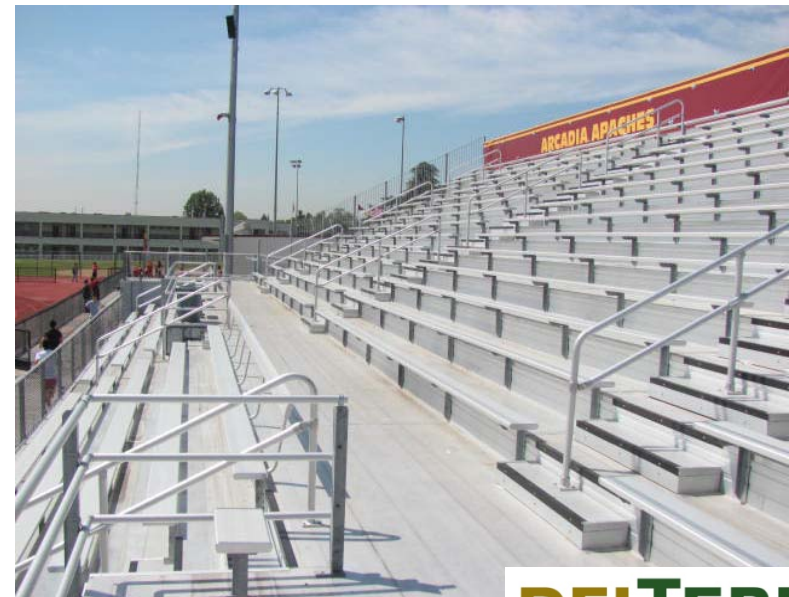


El Monte High School Bleachers

Project Scope: Design of Aluminum Bleachers

- Aluminum Bleachers for 3,000 spectators
- Elevator access to Press Box
- New hardscape
- Accessible seating
- Enclosed storage below for athletic program

Architect must have experience with pre-fabricated bleachers and site improvements on K-12 campuses.



DELTERRA

Mountain View High School Synthetic Track & Field

Project Scope for El Monte HS Synthetic Track

- New Synthetic Track
- New Long/High Jump, Pole Vault, Shot Put, Discus area
- Related construction activities; Rough and Final grading, Site drainage, Perimeter curbs, etc.
- Lighting

Architect must have experience with designing athletic facilities.



Fernando Ledesma High School Multipurpose Building

Project Scope

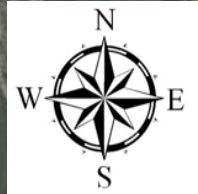
- 8,568 sf. (84'X102') Pre-manufacture multipurpose building.
- Boys and girls restrooms, bleachers, storage
- Parking modifications

Architect must have experience with modular buildings.



DELTERRA

Option "B"
Fernando Ledesma High School
Multipurpose Building



Google earth

Imagery Date: 3/8/2011 1994

34°04'38.14" N 118°00'10.29" W elev 321 ft

Eye alt 1599 ft

Phase II

Replace portable buildings – Mountain View

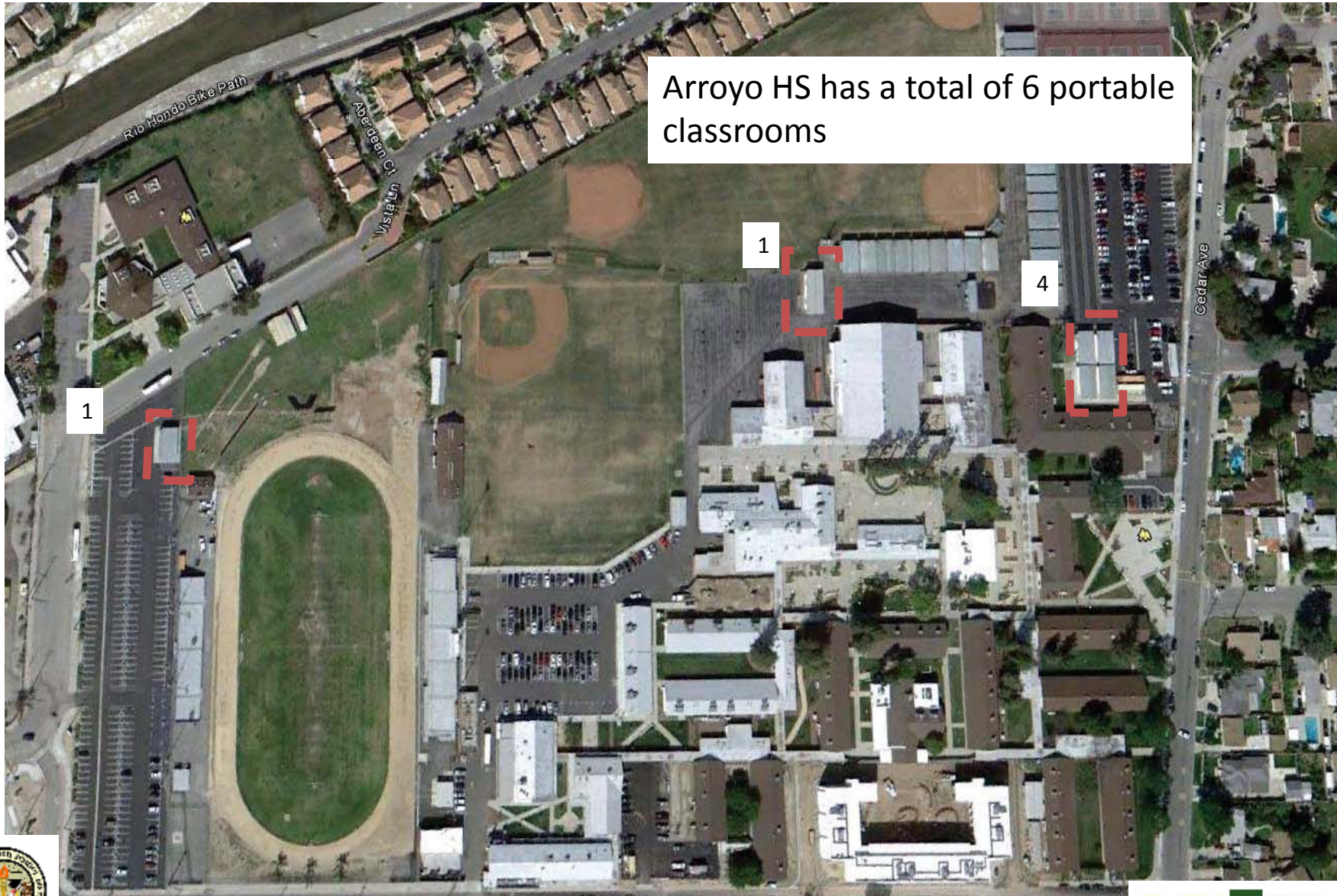


Replace (10) portable buildings
with permanent construction



Phase II

Replace portable buildings – Arroyo HS



Arroyo HS has a total of 6 portable classrooms



Potential Projects

- Theatrical Lighting
- Power Upgrades
- Security Camera System
- Exterior Lighting
- Security Fencing and Gates
- Access Card Reader Technology
- Emergency PA/Sound System



Potential Projects

- Replacement of outdated HVAC Systems
- Emergency generators
- Solar Technology to include solar parking shades
- Electric filter system to clean up power at each site
- Upgrade Energy Management System
- Sky Lights and Window Upgrades
- Energy efficiency lighting upgrades
- Roof Reflective Coating and Insulation upgrades



Questions ?



DELTERRA